



HORIZONZ RESIDENCE

THE HEIGHT *of* URBAN LIVING

A PLACE *to* RELAX
A WORLD *to*
EXPLORE

HORIZONZ RESIDENCE OFFERS
A GREAT SERVICED APARTMENT
LIVING EXPERIENCE, EQUIPPED WITH
USEFUL FACILITIES. IT IS SITUATED
CLOSE TO THE CITY CENTRE, PERFECT
FOR A VIBRANT URBAN LIFESTYLE.





PRIVATE
FLOW of LIFE

Enjoy a relaxing day at the infinity pool with your family, where a pool deck is surrounded by landscapes.

SPACES that
INSPIRE PEACE



Horizonz Residence is home to many facilities, one of which is the private gymnasium that overlooks the infinity pool.

INDULGE from
SUNRISE to SUNSET

FACILITIES PLAN



Level 4

- 1 Swimming Pool
- 2 Pool Deck
- 3 Gym Room
- 4 Female Changing Room
- 5 Male Changing Room
- 6 Outdoor Gym
- 7 Lift Lobby
- 8 Landscape



Horizonz Residence promises nothing less than a fulfilling lifestyle. Each day is a new opportunity to enrich yourself in the well-equipped facilities, such as the gymnasium that offers beautiful skyline views of Bintulu from within.

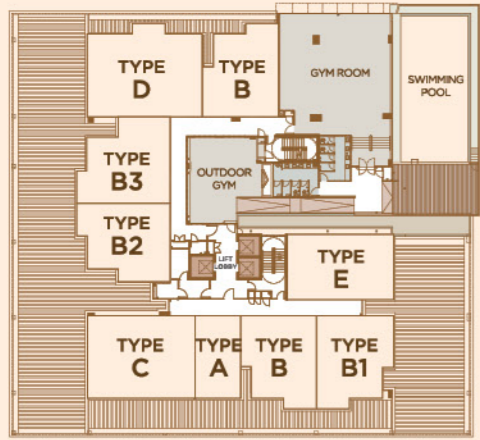


ALL *the* ZEST

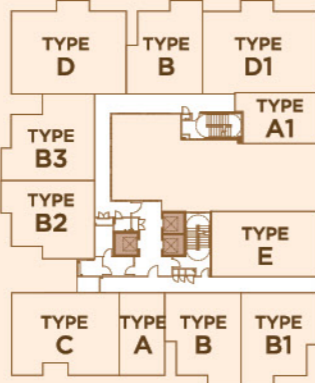
Take some time out of your busy schedule to recharge and keep up with your fitness goals. Work up a sweat at the indoor or outdoor gym—life at Horizonz Residence is all about going at your own pace.



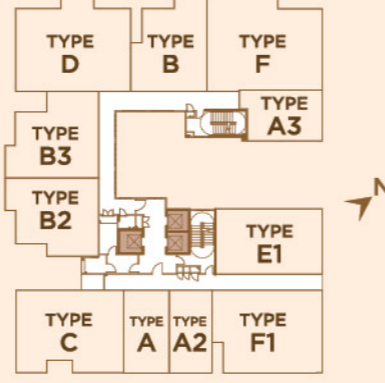
KEY PLAN



LEVEL 4



LEVEL 5 TO LEVEL 16

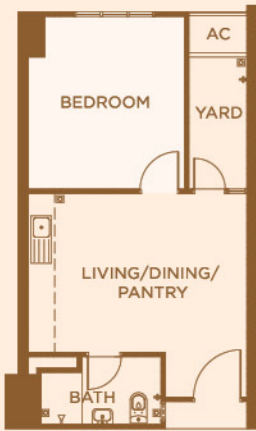


LEVEL 17 TO LEVEL 18

FLOOR PLAN

TYPE A/A2 (MIRROR IMAGE)

Built-up Size | 1 BEDROOM
463 SQFT | 1 BATHROOM



TYPE A1

Built-up Size | 1 BEDROOM
506 SQFT | 1 BATHROOM



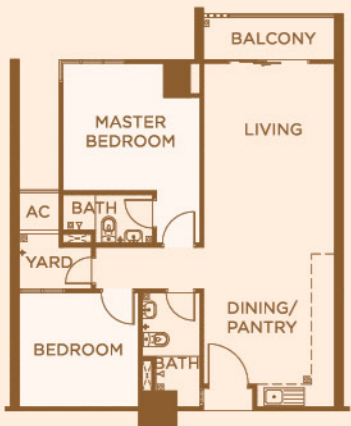
TYPE A3

Built-up Size | 1 BEDROOM
506 SQFT | 1 BATHROOM



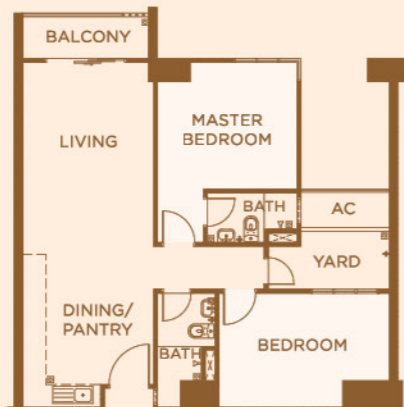
TYPE B/B1 (WITH PILLAR) | TYPE B2

Built-up Size | 807 SQFT
2 BEDROOM | 2 BATHROOM



TYPE B3

Built-up Size | 872 SQFT
2 BEDROOM | 2 BATHROOM



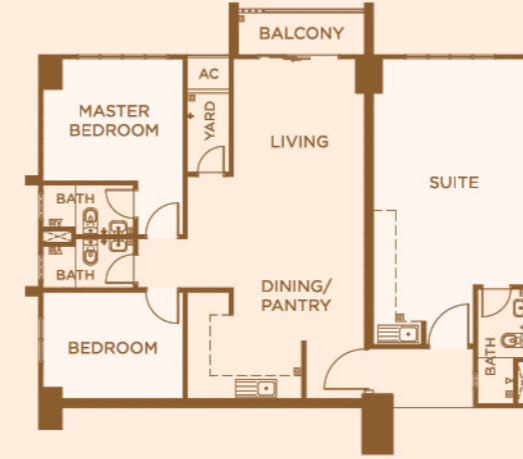
TYPE C

Built-up Size | 1,109 SQFT
3 BEDROOM | 2 BATHROOM



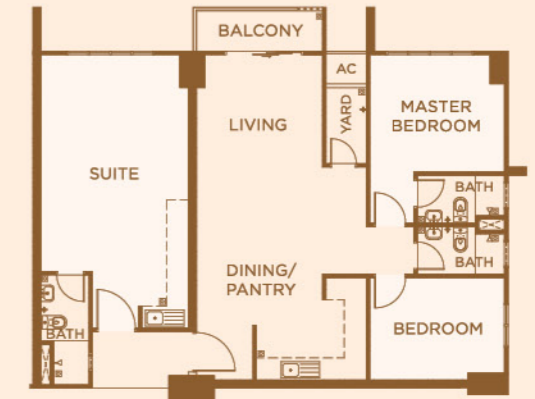
TYPE D DUAL-KEY UNIT

Built-up Size | 3 BEDROOM
1,227 SQFT | 3 BATHROOM



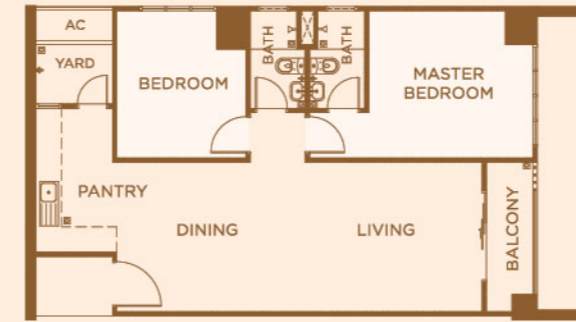
TYPE D1 DUAL-KEY UNIT

Built-up Size | 3 BEDROOM
1,227 SQFT | 3 BATHROOM



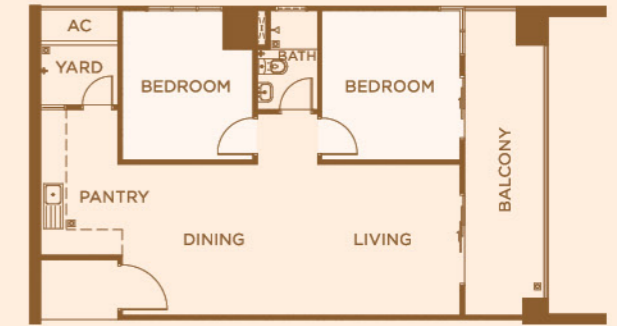
TYPE E

Built-up Size | 2 BEDROOM
861 SQFT | 2 BATHROOM



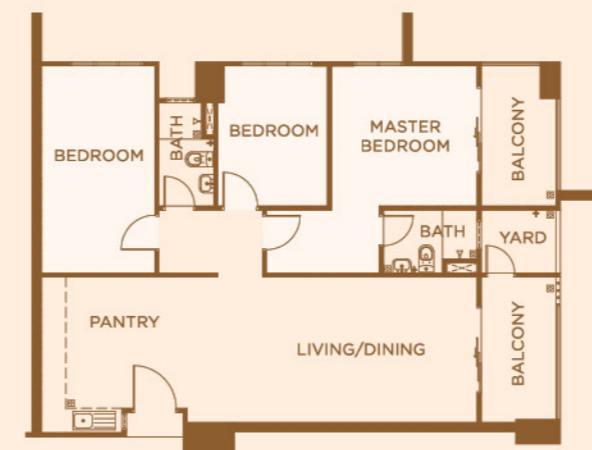
TYPE E1

Built-up Size | 2 BEDROOM
872 SQFT | 1 BATHROOM



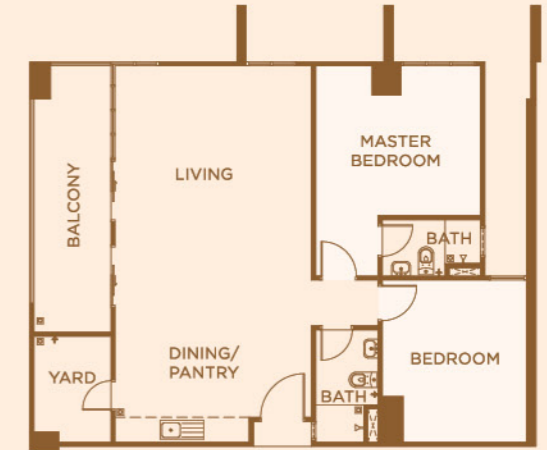
TYPE F

Built-up Size | 1,216 SQFT
3 BEDROOM | 2 BATHROOM



TYPE F1

Built-up Size | 1,098 SQFT
2 BEDROOM | 2 BATHROOM





SPECIFICATIONS

STRUCTURE	Reinforced concrete framework
ROOF	Selected Metal Sheet Roof (Main Roof)
WALLS	Brickwall
DOORS	Main Entrance - Timber Door with quality Lockset Other Doors- Timber Flush Door with quality lockset Glazed Doors - Aluminium Framed with Glass
WINDOWS	Aluminium Framed Glass Window
FLOOR FINISHES	Entrance Foyer - Composite Solid Core Flooring Living / Dining - Composite Solid Core Flooring Kitchen - Composite Solid Core Flooring Drying yard/ Balcony - Tiles Bedrooms - Composite Solid Care Flooring All Bathrooms - Tiles
WALL FINISHES	External - Plaster & Paint Internal - Plaster and Paint Bathrooms and Kitchen - Tiles up to ceiling height
CEILING FINISHES	Living, Dining and Bedroom - Plasterboard Bathrooms - Moisture resistant board

ALL *the* JOY

Choose from a wide variety of layouts and come home to well-crafted living spaces each and every day. Here, life is such a joy. Make it your own as you make all the special memories in the special place you call home.

WHETHER IT'S STARTING A NEW FAMILY OR MOVING IN WITH YOUR EXTENDED ONE, HORIZONZ RESIDENCE IS A PLACE WHERE YOU AND YOUR LOVED ONES MAY FLOURISH IN COMFORT, STYLE AND ROUND-THE-CLOCK SECURITY.

Experience splendid living with ample natural light in your living halls. Personalise your space to match your style and lifestyle. Horizonz Residence is tailor made for a fine urban living.





EVER CONNECTED to PEOPLE and PLACES

Horizonz Residence grants easy access to the plethora of wonderful urban offerings of Bintulu. Homeowners will live only a stone's throw to a host of amenities, such as dining, entertainment, healthcare, banking and much more.



4km to
The Spring
Shopping
Mall

2.4km to
Boulevard
Shopping
Mall



20km to
Bintulu
Airport



3.4km to
ParkCity
Commercial
Square



[197101000730(011286-P)]
(Exclusive marketing agent
for Warisar Sdn. Bhd.)

BINTULU OFFICE

No.1, Survey Lot 8453, Bintulu Town Square,
Jalan Tun Ahmad Zaidi, 97000 Bintulu, Sarawak.

FOR MORE INFORMATION

086-339 098

www.ibraco.com

Ibraco Berhad

Disclaimer: All illustrations and colour schemes are artist's impression only. The information contained herein is subject to change without notification as may be required by the relevant authorities or developers' architect and cannot form part of an offer or contract. All measurements are approximate. Whilst every effort has been made to ensure accuracy, the owner, developer and managers cannot be held responsible for any variations or inaccuracies.

Project Name : HORIZONZ RESIDENCE | Developer : Warisar Sdn Bhd | Authorized Agent : Ibraco Bhd | Approval Authority for building plan : BDA | SPA Approval No. S/90/21-22 | Project Address: Lot 9224 (Part Of Parent Lot 5560), Block 31, Kemena Land District, Off Jalan Tun Ahmad Zaidi, Bintulu | Expected date of completion : 36 months from the date of approval building plan | Land tenure : 60 years | Type A : 15 Units | Type A1 : 12 Units | Type A2 : 2 Units | Type A3 : 2 Units | Type B : 28 Units | Type B1 : 13 Units | Type B2 : 15 Units | Type B3 : 15 Units | Type C : 15 Units | Type D : 15 Units | Type D1 : 12 Units | Type E : 13 Units | Type E1 : 2 Units | Type F : 2 Units | Type F1 : 2 Units | Total Units : 163 Units | Housing Developer's License No. : L0037/KP/HD/08/2023/0003 Validity Period : FROM 26/04/2023 TO 19/12/2026 | Advertisement & Sale Permit No. P0040/KP/HD/08/2023/0003 | Validity Period : FROM 05/05/2023 TO 19/12/2026 | Approved Building Plan No. : 2996/2023B | Price From : RM 327,800 TO RM RM 885,255